



Dashboard User Guide

These dashboards provide data on the number of hospital admissions and costs and the number of people with Parkinson's in health authorities in the UK. They are aimed at service planners, commissioners of services and health professionals involved in delivering Parkinson's care.

Access

The dashboards are accessible from the UK Parkinson's Excellence Network at: www.parkinsons.org.uk/professionals/resources/excellence-network-data-dashboards

Once on the Excellence Network page, there is a link to access the dashboards:

England data dashboards

The [England data dashboards](#) provide a snapshot of data about hospital episode data trends and incidents for Clinical Commissioning Groups (CCGs) in England.

The data contained in the dashboards aims to give you a brief overview of information about your CCG, hospital trust or Integrated Care System (ICS) to enable you to engage in more detailed local discussions.

[See the England dashboards and user guide](#)

Homepage

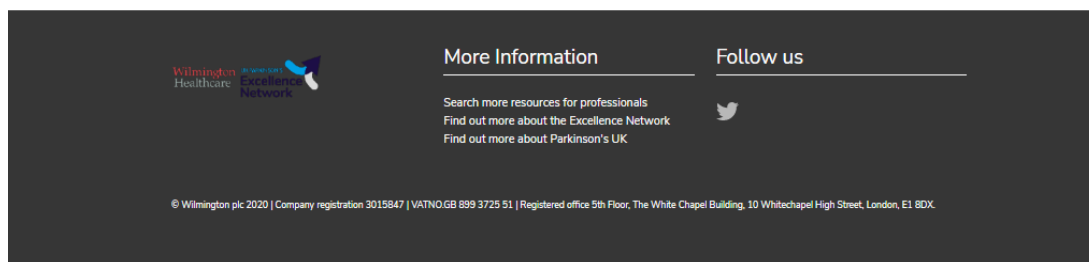
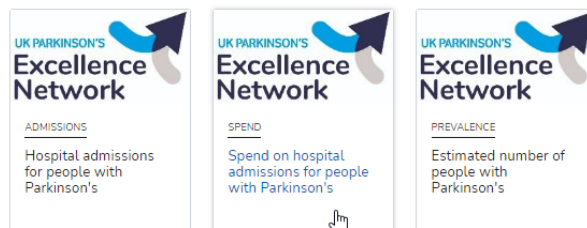
The dashboards homepage has a series of tiles which take you to the different dashboards. To access your chosen dashboard, click on the tile:



Excellence Network data dashboards

The tool is aimed at service planners, commissioners of services and health professionals involved in delivering Parkinson's care. It provides a snapshot of data about hospital episode data trends and incidents and prescribing information for **Clinical Commissioning Groups (CCGs)** in England and Health Boards across Scotland and Wales all in one place. This level of detail and data is currently not available for Northern Ireland.

The data contained in the tool is designed to give you a snapshot of information about your CCG or Health Board and to enable you to engage in more detailed discussion locally.



Using the dashboards

There are three dashboards - 'Hospital admissions for people with Parkinson's', 'Spend on Hospital admissions for people with Parkinson's' and 'Estimated number of people with Parkinson's'.

Get the information you need using filters

To get the information you need there are a number of common filters to choose from. These are:

Country

Where appropriate, select where appropriate the country you wish to view (please note at the moment we are awaiting data for Scotland and Wales and data for Northern Ireland is unavailable).

Organisation Type

Where appropriate, select where appropriate the organisation type you wish to view. The type(s) available will be relevant to the selected country, for example Health Boards in Scotland, ICS in England.

Organisation Name

Select the name of the organisation you want to focus on. This will be of the type selected in the organisation type filter. You can search the organisation name filter using the filter search bar.

Metric

Select which metric you want to view in the dashboard - for example, the number of hospital admissions.

Condition

In the hospital admissions dashboards, you can choose to look at all data for people with Parkinson's or to focus on one of the main reasons for hospital admission (such as falls or infections).

Value Type

In the hospital admissions dashboards, you can choose to view the actual values or the number of admissions per 100,000 patient population.


Fiscal Year

Select which year of data you want to view.

Compare data for different organisations

When you choose an organisation to look at, the first two dashboards automatically compare data across different organisations. There are three types of comparators to choose from: RightCare, Geographic and Self-select. You can navigate between the three comparator types using the navigation buttons located in the top right of the dashboard:

Fiscal Year 2019/2020	Country England	Organisation Type ICS	Organisation Name (Multiple values)
Admission Type All admissions	Metric Admissions	Condition Parkinson's	Value Type Actual values



Navigation buttons
(L to R: Self-select, Geographic, RightCare)

The RightCare option compares your selected organisation to its three most similar peers, as defined by the NHS, based on factors such as similar demographics.

The Geographic option compares your selected organisation to its three closest peers, as the crow flies between their headquarters postcodes.

The Self-select option allows you to compare your selected organisation to any organisation of a similar type that you choose yourself. Although the dashboards allow you to select many, we recommend picking no more than 4 organisations for best display on screen.

If you want to remove one or all organisations from your comparison you can do so by deselecting under the 'Organisation Name' filter.

The dashboards explained

Dashboard 1 - Hospital admissions for people with Parkinson's

This gives an overview of inpatient activity for people with Parkinson's and allows you to compare your selected organisation to comparators (RightCare, Geographic, Self-select; described above).

Activity table

The activity table shows data for the selected year, organisation(s), metric, condition and value type. The values for your filter selections are coloured from lowest (lightest) to highest (darkest) across admission types, allowing you to compare values across organisations.

3-year trend chart

This chart shows the 3-year trend for the selected organisation(s), admission type, metric, condition and value type. Organisations are shown in the same colours between the 3-year trend chart and activity bar chart.

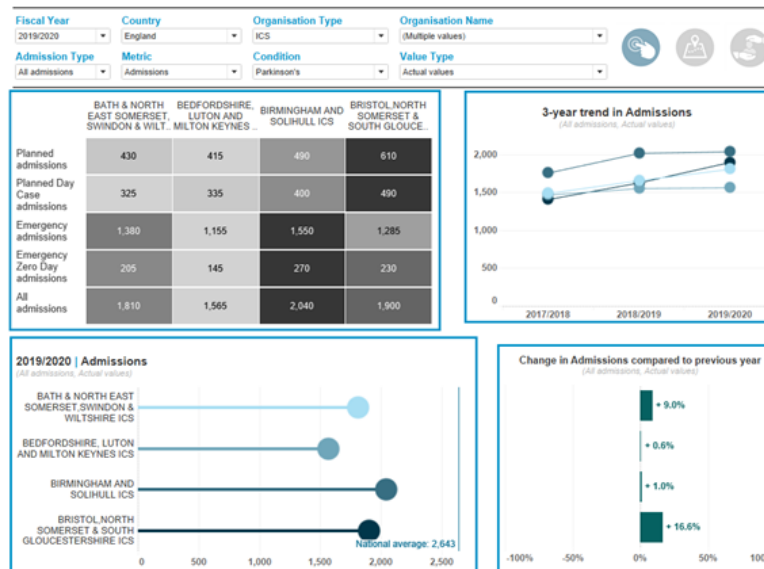
Activity bar chart

This chart shows data for the selected year, organisation(s), metric, condition and value type.

Activity change chart

This chart shows the change between the current year's activity and previous year's activity for the selected filters.

Sub-headings on the 3-year trend chart, activity bar chart and activity change chart contain additional information about the admission type and value type in your filter selections.



Activity table

3-year trend chart

Activity bar chart

Activity change chart

Dashboard 2 - Spend on Parkinson's

This gives an overview of inpatient costs for people with Parkinson's and allows you to compare your selected organisation to comparators (RightCare, Geographic, Self-select; described above).

3-year trend chart

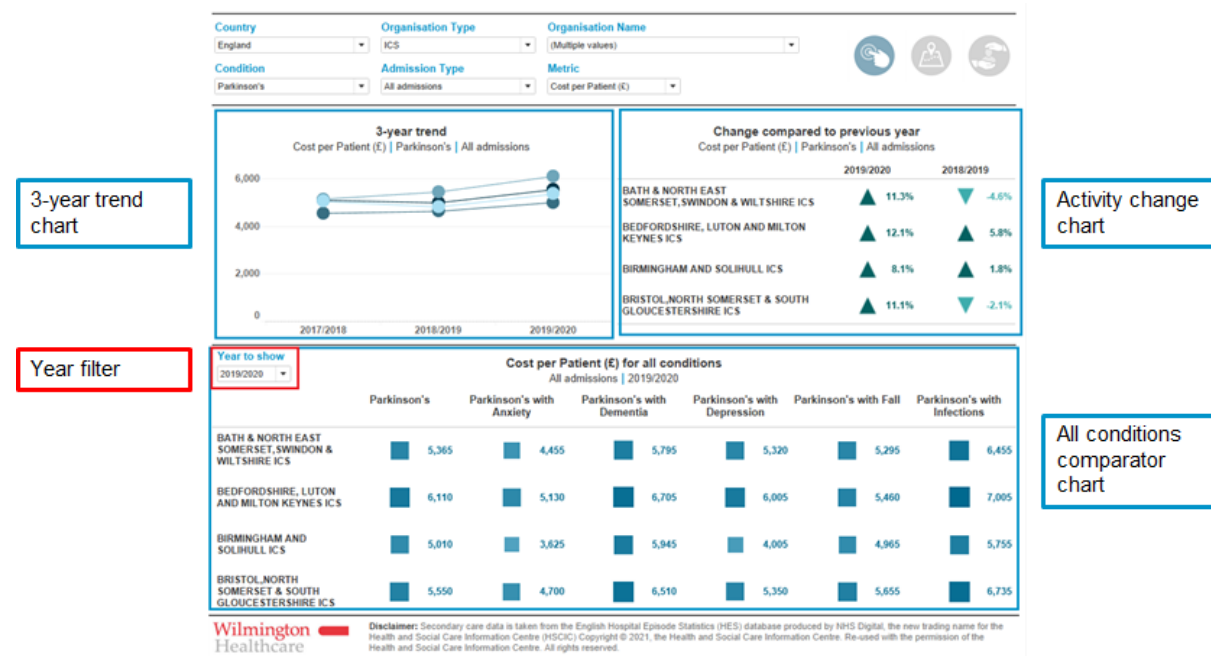
This chart shows the 3-year trend for the selected organisation(s), condition, admission type, and activity type:

Activity change chart

This chart shows year-on-year change in previous years' activity for the selected filters:

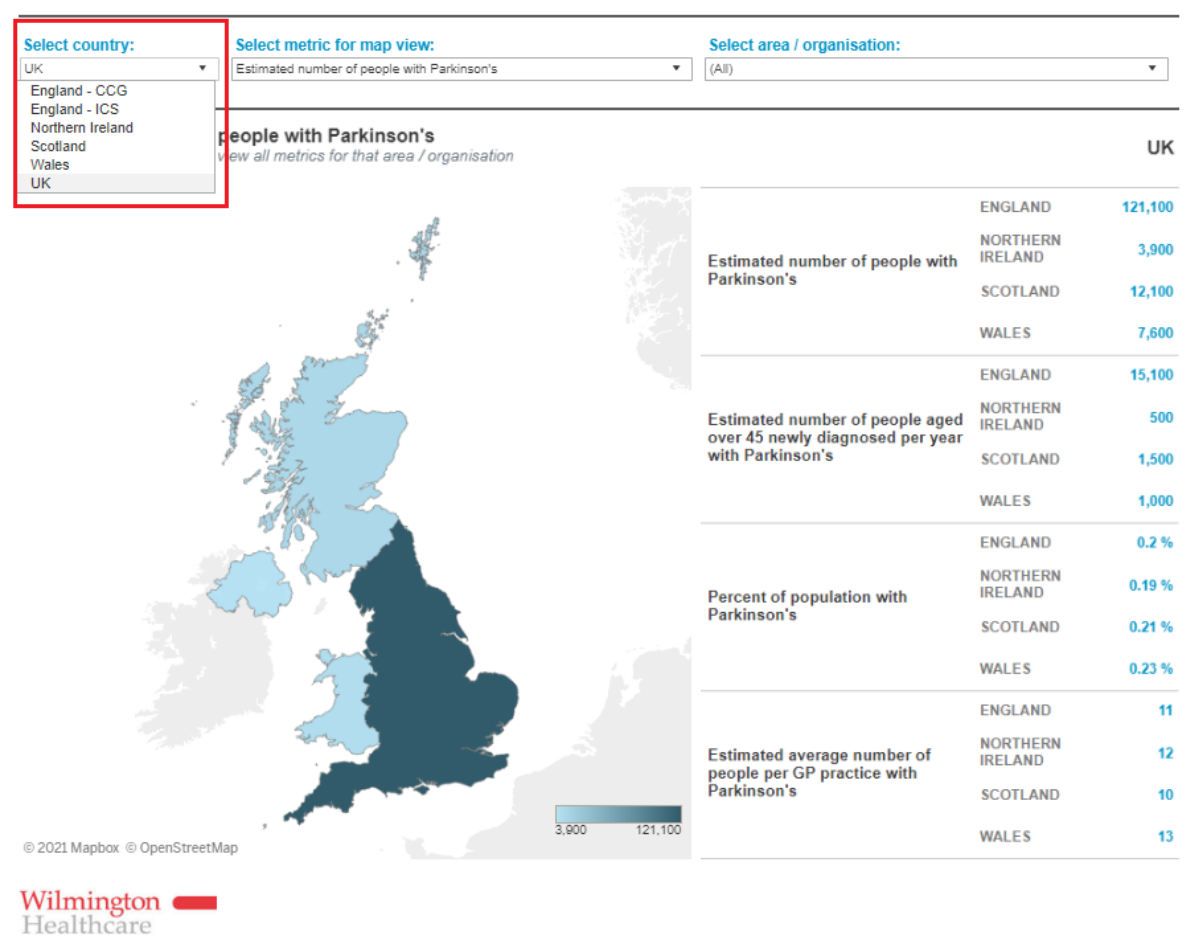
All conditions comparator chart

The comparator chart shows one year's activity for the selected organisation(s) and activity type, with colour (darker) and size (larger) used to highlight areas of higher activity. You can change which year of data to view using the 'Year to show' filter.

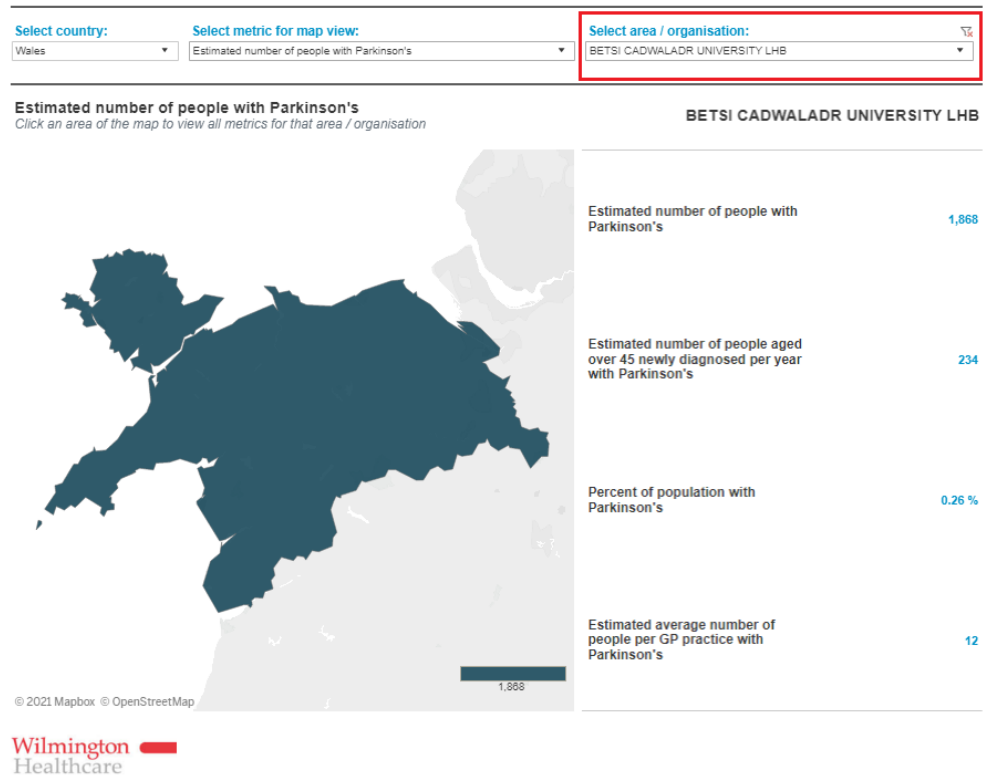


Dashboard 3 - Estimated number of people with Parkinson's

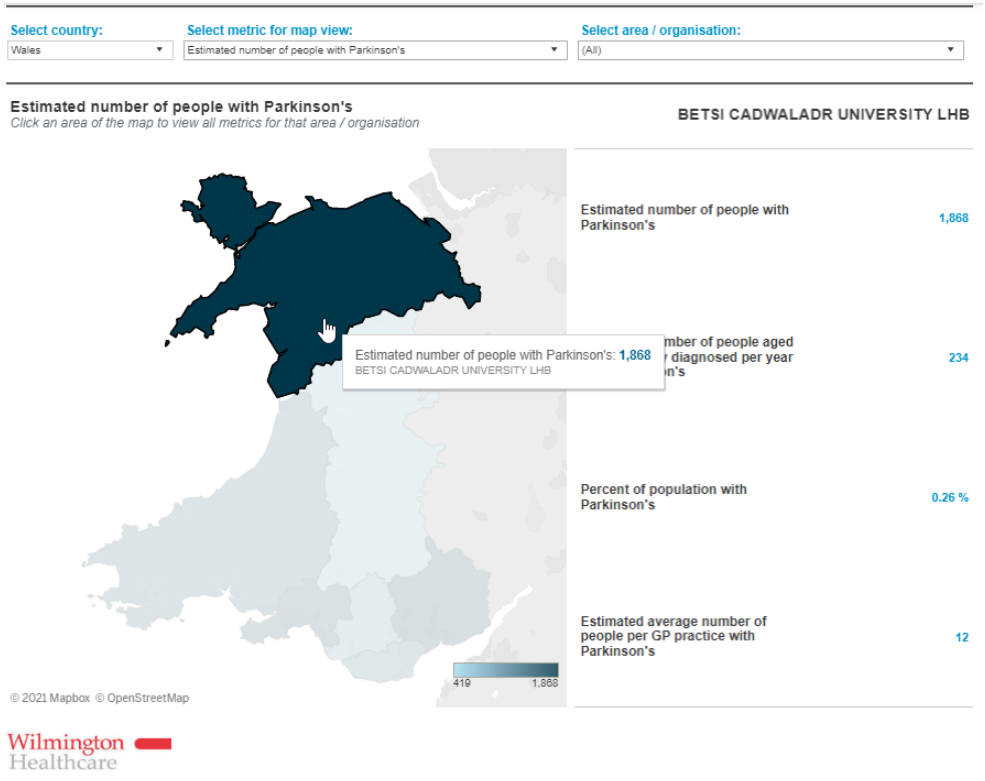
This shows data on the number of people with Parkinson's for the four UK nations. You can choose to view metrics at country level on a UK map, or by health areas within each nation using the select country drop-down filter.



Selecting an area/organisation from the drop-down filter will zoom the map to that area and update the table to show data for your selected area:

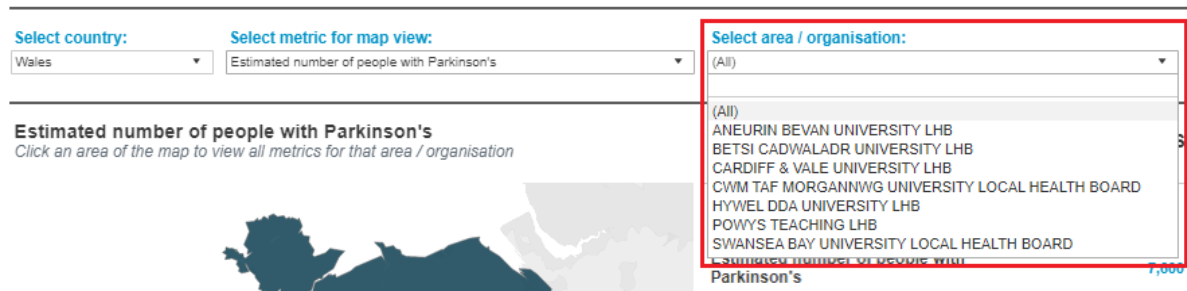


Alternatively, you can click an area of the map to show the metrics for that area/organisation without the map zooming:

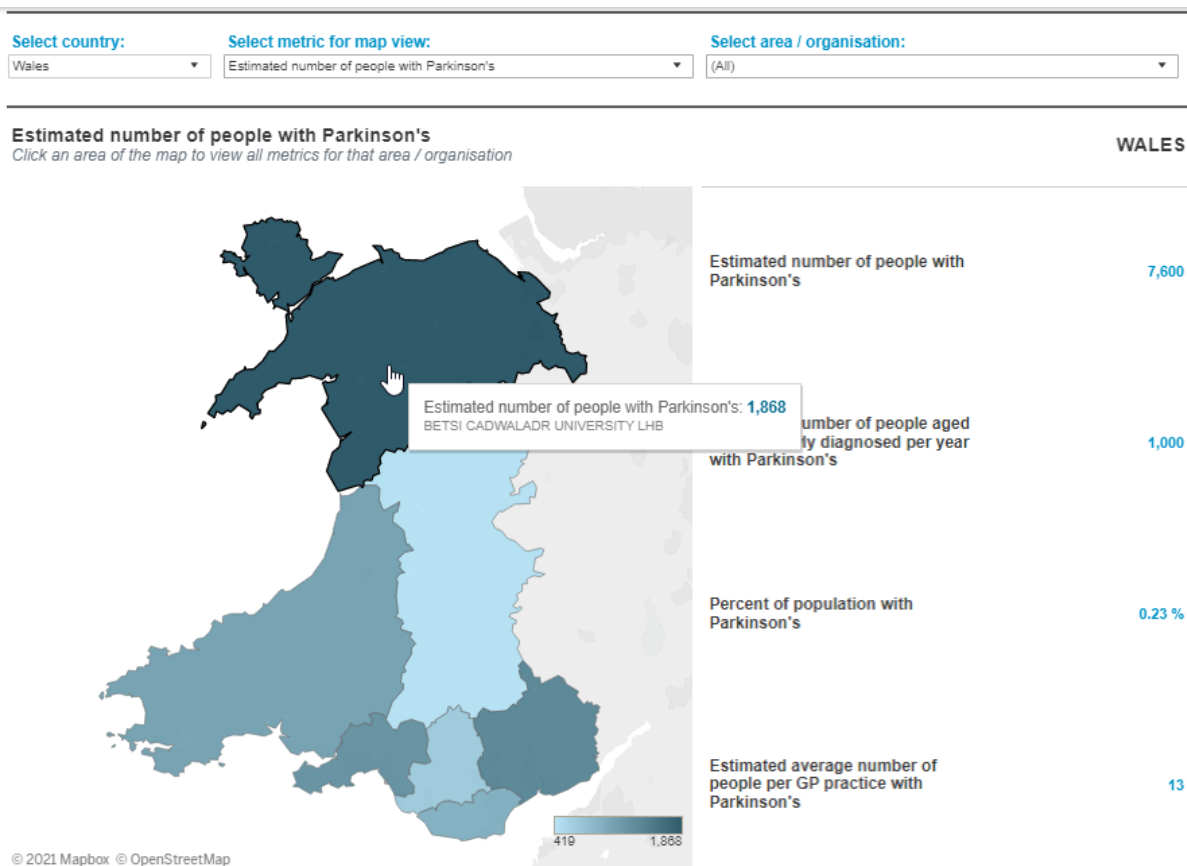


To reset the map, change the drop-down filter selection to '(All)' or re-click the same area to de-select it:

Change filter:



Re-click same area:



Further information

Suppression

There may be some cases where instead of a number you will see a * or -1. This is due to data suppression, used to prevent identification of a patient. This happens when the number of people is 7 or below. In some cases, e.g. bar charts, the suppression is shown as no bar, but the suppression * is present for you to view. All other numbers above 7 that could relate to a patient are rounded to the nearest 5. Data rounding is based on the original figures, so some items such as totals may not sum correctly. The accompanying information document accessed from [\[add details of how/where to access\]](#) gives further information on suppression, including test scenarios.

Information on diagnosis codes

Further information, such as diagnosis codes and relevant calculations, can be found in the accompanying information document accessible in [\[add details of how/where to access\]](#).

<https://docs.google.com/document/d/1BcKeajmiB5JUQCx-qToH1ZmLuEe4o99/edit>